

TRAVEL PHOTOGRAPHY ADVENTURE

TASMANIA

December 2 - 15, 2007

March 2 - 15, 2008

\$3795pp

Advance your photographic skills while travelling through the wine and wilderness regions of Tasmania on a 14 day exploration. We have designed an integrated programme of travel and workshop themes to create the most wonderful opportunities you could ever imagine – for beginners and advanced photographers alike. You get a private coach, photo instructor, a guaranteed maximum group size of 12 and the experience of a lifetime.

Total cost per person is AUD\$3795, and the optional single supplement is AUD\$895.
Maximum group size of 12, minimum of 8. Domestic flights are not included.
Conditions apply.

PHOTOGRAPHY
by Ewen Bell



PHOTOGRAPHY TOUR



14 Day Photo Tour around Tasmania | Fully Escorted by Ewen Bell, Professional Photographer | Coach & Driver for the full duration | 13 Breakfasts | 4 Dinners | 1 Lunch

Launceston | Tamar Valley | Daniel Alps at Strathlynn | Bicheno Penguin Tour | Freycinet National Park | Wineglass Bay | Tasman Peninsula | Port Arthur | Richmond | Hobart | Huon Valley | Mt Field National Park | Strahan | World Heritage Cruises | Cradle Mountain National Park | Ashgrove Farm Cheese | Anvers Chocolate Factory | Christmas Hills Raspberry Farm | Award Winning Wineries | selection of Tasmania's Great Short Walks



Experience a unique and captivating journey through some of Tasmania's most naturally beautiful scenery. You will be more than a traveller however, you will be learning new photographic techniques along the way and getting the chance to put these skills into practice. This trip will immerse you in the cultural, scenic and human richness of Tasmania while giving you an unparalleled opportunity to develop your own style and techniques as a photographer.

With time spent in lessons and learning techniques, lots of time 'in the field' practising and review sessions to look over your work your skills and confidence is certain to grow.

Ewen has been photographing the world for longer than he cares to remember and been published in countless travel magazines and brochures as well as books, trade magazines and websites (including this one!). On this trip Ewen will impart all his knowledge in the best classroom possible - while travelling.

TRAVEL PHOTOGRAPHY ADVENTURE
PRE-TRIP DOSSIER 2007/2008

TASMANIA

The Group Travel Company
Phone 1800 839 337
info@grouptravelcompany.com.au
www.grouptravelcompany.com.au

www.ewenbell.com | copyright 2007 | 2/9

COMFORT AND ADVENTURE



WORKSHOP HIGHLIGHTS

- Understanding your subject
- Getting closer to your subject
- Portrait photography on the run
- How to make use of your wide angle lens
- Landscape and wildlife photography
- Using available light for dramatic effect
- Capturing a sense of motion
- Shooting for context
- Using pattern repetition, colour and form
- Expression and creative process
- Techniques unique to digital photography

HOW WE TRAVEL

The travel style for this journey will combine comfort and experience to give you an in depth look at Tasmania. You will be immersed in the rich wilderness of this beautiful island as well as being guided through its history and charms. Key attractions are included on this itinerary, such as the spectacular national parks at Cradle Mountain and Freycinet, but we have also included out of the way destinations and the time to enjoy them. Our time in selected wineries, for example, will be treasured long after the tour has ended. You will never be rushed from one place to another, instead you will have time to delve a little deeper and make your own connection. This is a vital ingredient to successful photography and the process of cultivating your skills.

WHAT YOU WILL LEARN

This is a special way to learn about photography. Time is set aside during the trip for theme sessions which introduce techniques and concepts. After each session you will have a chance to put them into practice. There will be frequent reviews of your work and a chance to discuss your experiences for that day. The skills covered in this course are aimed at travel photography particularly, but will benefit all areas of your work.

No matter what your level of skill or experience you will learn invaluable techniques on our course. For 14 days we will be at your disposal to explore the high level concepts and fine detail practicalities of photography as you travel. Beginners can expect to learn basic skills, new ways of thinking about their photography and gain structured themes to help them take great photos in challenging conditions. Advanced photographers will also gain insight into the world of publishing travel photos and high level concepts that determine which images will be more likely to gain selection by an editor.

ACCOMMODATION

The standard of accommodation for our tour in Tasmania will be a cut above the average. Our hotel selections offer character and charm that add a little something to the enjoyment of the journey. This trip operates on a twin share basis, hence single travellers will be allocated a same-sex room mate. Please ask for a single-room rate if you do not wish to share your accommodation.

TAKE BETTER PHOTOS

The photographic workshops included with this trip are aimed at people with a fundamental knowledge of their camera. A basic knowledge of aperture, focal length, depth of field and exposure is useful, but not essential. We will even help you learn the technical use of your camera, if that's what you need. People of many different skill levels and ambition will be gathered for the journey, so expect to be in the company of diversity.

This journey will appeal to anyone who wants to immerse themselves in the process of cultivating skills and exploring cultures. Material is presented at key stages during our journey. You will have a chance to discuss the techniques and principles behind the material, and then immediately go out and put the material into practice. This will not give you a qualification, but hopefully will give you confidence and direction to take better photos.

Our Tasmanian experience will provide an unparalleled opportunity to practice photography in one of Australia's most scenic destinations. We help you to get the right sunset, to access the most idyllic wilderness, to experience the real charms of Tasmania while making sure you have the time to explore your craft in the process. You won't be worried about travel and accommodation – it's taken care of for you and in fine style. You won't be rushed from hotel to hotel; you will have time to take photographs and to review them at the end of each day.

To help engage with the process of learning we offer a series of photographic themes which introduce key concepts and techniques which will help you improve your photography. Each session will discuss a topic and outline associated techniques. A set of course notes are provided to accompany these sessions. Your travel itinerary has been

developed in conjunction with the course sessions, so you can immediately practice the skills you learn.

We will also encourage people to share their work during the trip. Review is very important and can greatly assist the development of your own personal style. Throughout the trip you will be free to consult with your instructor as well. You are not confined to course sessions to talk about your work and ideas! This will be an extended immersion that will accelerate your learning and development.

TRAVELLING DIGITAL

For the purpose of this course a digital camera is the most suitable equipment to carry. We will save the debate about film vs digital for the journey, there will be plenty of time to discuss opinions! Our trip is a chance to develop new skills and the immediate feedback offered by digital cameras is hence valuable. The quality, manual control and practicality offered by Digital SLR's make them perfect for travel photography.

Your instructor will also be carrying a laptop computer for the journey, so there will be ample opportunity to review your photographs and study your image in detail.

ITINERARY IN FULL

Day 1 | Launceston (D)

Accommodation: Mercure Earlington Hotel

After arrival into Launceston, Australia's third oldest city, spend the afternoon exploring the breathtakingly beautiful Cataract Gorge - a piece of wilderness right on the doorstep of Launceston itself. Enjoy a welcome dinner that evening at your hotel.

Day 2 | Tamar Valley | Award-Winning Vineyards | Unique Nature Reserves (B)

Accommodation: Mercure Earlington Hotel

After breakfast, we depart by coach for the Tamar Valley region. Follow the River Tamar as it meanders for close to 60kms through the heart of some of Tasmania's award winning vineyards, unique wetlands, and quaint riverside villages and towns.

Spend time at Tamar Island, a wetland sanctuary providing the opportunity for you to observe the behaviour of a variety of wild birdlife, as well as frogs, dragonflies and lizards. Rare and endangered flora can also be observed on the island. Travel on to the heart of the wine growing region of the valley.

We recommend lunch today at the award winning restaurant 'Daniel Alps at Strathlynn'. The restaurant affords guests one of the most picturesque eating spots in all of Tasmania. The surrounding vineyard and panoramic views of the Tamar River also afford guests an unforgettable visual experience.

Nearby Brady's Lookout is well worth visiting. It is a charming paradox that this rocky outcrop, once used by the bushranger Matthew Brady to spy on possible victims on the road below, is now a panoramic lookout across the Tamar Valley. Travel back to Launceston. Dinner tonight is at your leisure.

Day 3 | Historic Village of Evandale | Clarendon House | Heritage Highway | Bicheno Penguin Tour (B,D)

Accommodation: Beachfront at Bicheno

After breakfast, depart Launceston for the nearby classified Historic Town of Evandale. Time can be spent here exploring the numerous buildings that remain in largely original condition. Keep an eye out for John Kelly's residence, the father of Australia's notorious bushranger, Ned Kelly.

Travel on to nearby Clarendon House, an 1836 built National Trust residence. Recognised as one of Australia's most impressive and best preserved Georgian houses, Clarendon House along with its many interesting



outbuildings – a dairy, butcher’s shop, a bakehouse, a gardener’s cottage, a large stable – make it a residence worth visiting. For lunch we recommend Campbell Town and its excellent bakeries and cafes.

We travel on to Tasmania’s East Coast and the attractive seaside resort town of Bicheno. Spend time exploring the Diamond Island Nature Reserve, where that evening you will explore further as part of an organised Penguin Tour. Dinner tonight is at the hotel restaurant.

Day 4 | Freycinet National Park – Coles Bay, Wineglass Bay, Cape Tourville, Sleepy Bay (B,D)

Accommodation: Beachfront at Bicheno

Depart Bicheno for the world renowned Freycinet National Park. Today, explore the Cape Tourville area of the park which affords visitors sweeping views along the coast. Walk down into Sleepy Bay (10min return) and view the often wild and rough seas that occur here. Take the one hour return walk over to Wineglass Bay, voted recently one of the world’s top ten beaches.

For lunch, the Coles Bay Bakery is well worth trying out. Leaving the region that afternoon, spend time walking around the coast road at Coles Bay. As the afternoon progresses, the sun starts to transform the granite of the Freycinet National Park’s Hazards Mountains into the most wonderful pink colour, ideal for further photography. Travel back to Bicheno. Dinner tonight is at the hotel restaurant.

Day 5 | Swansea | Tasman Peninsula | Port Arthur (B)

Accommodation: Stewarts Bay Lodge

After breakfast we depart Bicheno for the drive south to the Tasman Peninsula. Passing through Swansea, admire the substantial number of historic homes and buildings which give this destination a distinctive charm. South of Swansea, explore the convict built Spiky Bridge, complete with unusual spikes that were designed to prevent cattle falling over the sides.

Travel on to the Tasman Peninsula where you will be staying the night at Stewarts Bay. Your accommodation is well suited for exploring the surrounding area as it is nestled between a beach, a forest, the ocean, a national park and Australia’s most profound historic site – Port Arthur.

Numerous short walks await each visitor, as does the protected bush setting with its abundant native animals and birds. Explore nearby Stewarts Bay and Ladies Bay, the latter so named because the wives and daughters of the officers of Port Arthur used to bathe there out of sight of the nearby convicts.

For dinner tonight we recommend the nearby Felons Restaurant, located within the Port Arthur Historic Site. It’s a 10-15min easy walk on a smooth track. Take a torch, and on the way back, keep an eye out for some of Tasmania’s renowned nocturnal wildlife.



Day 6 | Historic Village of Richmond | Coal River Valley Vineyards | Hobart (B)

Accommodation: Salamanca Inn

Depart the Tasman Peninsula for the historic township of Richmond. Set on the banks of the Coal River, Richmond has no fewer than 45 listed buildings on the National Estate, and in many ways, is a town which has been suspended in time. Explore the nearby Coal River Valley, an area acclaimed for the quality of its cool-climate wines. Lunch today we recommend at Meadowbank Estate. Travel on to Hobart. Dinner tonight is at your leisure.

Day 7 | Hobart Waterfront | Salamanca Market (B)

Accommodation: Salamanca Inn

After breakfast, explore the renowned Salamanca Market which is held every Saturday throughout the year. Nearby, the waterfront of Hobart is worth exploring as is the historic suburb of Battery Point. The rest of the day can be spent at leisure, and you may select your own options for lunch and dinner.

Day 8 | Huon Valley | Short Walks | Home Hill | Mt Wellington (B)

Accommodation: Salamanca Inn

After breakfast, depart for the beautiful Huon Valley, home to various organic and specialist gourmet producers. Enjoy a wilderness walk this morning at Duckhole Lake, a flooded sinkhole that forms part of the surrounding cave and karst landscape. An easy stroll on a level track, the walk takes approximately an hour to complete and is suitable for all age groups.

Travel to Home Hill, a renowned Tasmanian Boutique Vineyard, Winery and Restaurant for lunch. Travel on to Mt Wellington, and explore on foot one of its many enjoyable short walks. Views of Hobart and the surrounding waterways are spectacular. Dinner tonight is at your leisure.

Day 9 | Mt Field | Strahan (B,D)

Accommodation: Franklin Manor

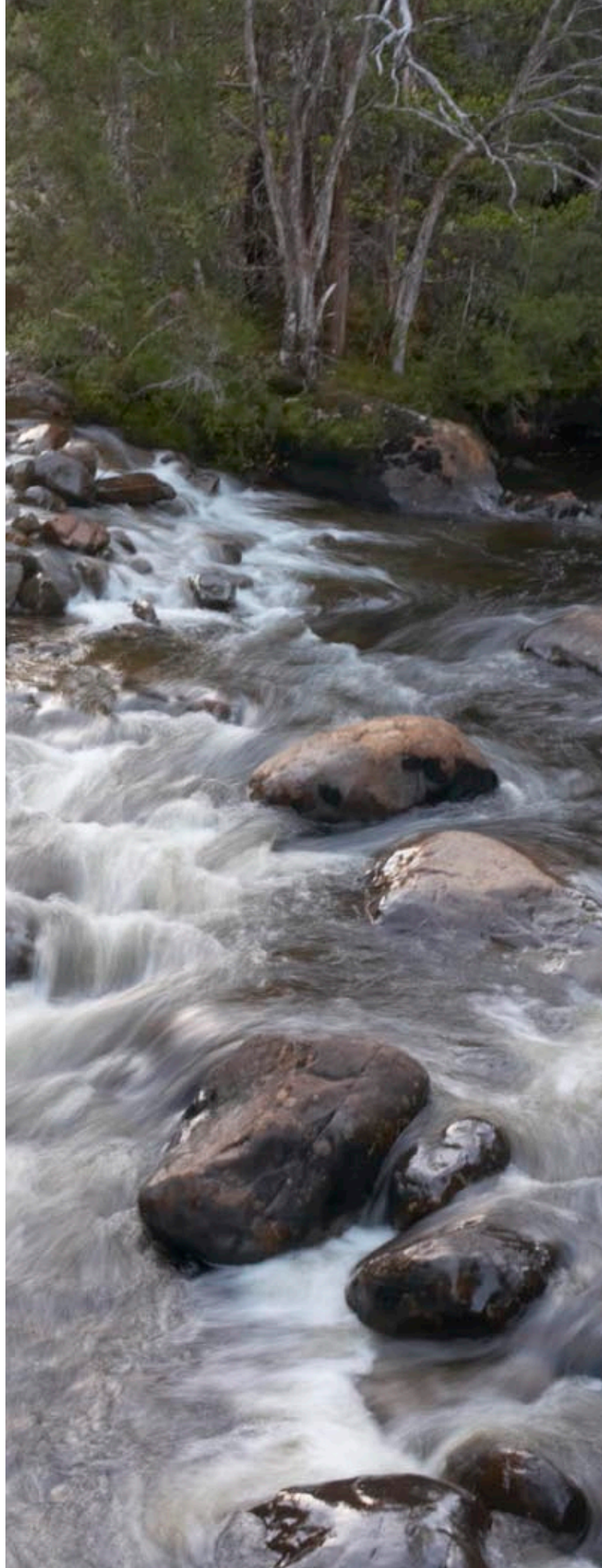
After breakfast, say goodbye to the waterfront city of Hobart and head west. Call in to the Mount Field National Park and enjoy a 20 minute return walk to Russell Falls, one of Tasmania's most treasured natural locations. This gentle walk will take you through a mixed forest of towering swamp gums, dogwood, musk and myrtle. Beware of the breathtakingly beautiful Russell Falls.

Travel on to Strahan. Enjoy a sumptuous three course dinner tonight at your hotel.

Day 10 | Strahan World Heritage Cruise (B,L)

Accommodation: Franklin Manor

After breakfast, enjoy an unforgettable day cruising on Macquarie Harbour and up into Tasmania's World Heritage-listed South West Wilderness National Park. The cruise takes you through the narrow passage of Hells Gates, the entrance to Macquarie Harbour.



Visit an Atlantic Salmon and Ocean Trout sea farm before heading to some of the oldest convict ruins in Australia, Sarah Island. Pre-dating Port Arthur by decades, Sarah Island hides a fascinating tale of human triumph over adversity, brought vividly to life by expert guides.

The day's highlight though is undoubtedly the two hours spent in the serenity of the imposing Gordon River, complete with a stroll into the nearby rainforest. A lavish buffet luncheon and a narrative which brings the river and its rich history to life complete an unforgettable day. Dinner tonight is at your leisure.

Day 11 | Strahan | Cradle Mountain (B)

Accommodation: Cradle Mt Wilderness Village

After breakfast, depart Strahan for Cradle Mountain. Passing through Queenstown, keep an eye out for its famous hills; void of all foliage due to its rich history of mining minerals and gold. Spend time this afternoon exploring the National Park on one of the many excellent short walks. Dinner tonight we recommend at Grey Gums Restaurant.

Day 12 | Cradle Mountain National Park (B)

Accommodation: Cradle Mt Wilderness Village

After breakfast, the full day is yours to explore the National Park further. Recommended short walks include the Dove Lake Loop Track (2 hours), the Weindorfers Forest Walk (20 mins), and the Enchanted Walk (30 mins).

The Dove Lake Loop Track offers an excellent introduction to the park. The track takes you under the shadow of Cradle Mountain, through the tranquil Ballroom Forest and back along the western shore of the lake to your starting point. The Weindorfers Forest Walk is an easy graded walk through a forest of King Billy pines, celery-top pines and myrtles. Lastly, the Enchanted Walk passes by scenic waterfalls, pools, moorland and rainforest before returning to the Cradle Mountain Lodge.

We recommend lunch today at Cradle Mt Lodge's Tavern Bar & Bistro and dinner back at Grey Gums Restaurant.

Day 13 | Cradle Mountain | Launceston (B)

Accommodation: Mercure Earlington Hotel

After breakfast, depart Cradle Mountain for Launceston. Time has been allocated today for a visit to Anvers Chocolate Factory, a boutique chocolate maker specialising in truffles, pralines, fudges and more. Nearby, call in to Ashgrove Farm Cheese. Producing award-winning handmade cheese, the numerous styles produced are available for you to try.

Continuing on this gastronomic journey, the Christmas Hills Raspberry Farm will be visited where its eight varieties of raspberries can be tried, along with their extensive list of raspberry infused products. Dinner tonight is at your leisure.

Day 14 | Launceston | Home (B)

After breakfast, depart Launceston for your flight home.



ESSENTIAL EQUIPMENT



We recommend the use of Digital SLR cameras for this workshop, but you are not restricted from using any type of camera you may have, including conventional film SLRs and compact cameras. Digital SLR cameras offer excellent manual controls and plus us the ability to review our work at the end of each day - a valuable part of this course. You may wish to consider an additional storage disk or even bring your laptop if you have one.

On this tour you may benefit from a telephoto lens (200mm or greater) when shooting wildlife, and a wide angle lens (24mm or better) when shooting landscapes. Most of our course involves getting as close as possible to the subject, regardless of what lens you are using.

Remember that most Digital SLRs multiply a standard lens by roughly 1.5, so factor this in when determining your wide-angle. The range of 24mm to 70mm will cover almost every need, but on occasion we hope to encounter some wildlife and you'll want a long lens for that.

A good quality day pack will be an essential part of the packing list. Crumpler and Lowe make excellent packs that are designed for camera equipment. Ideally your pack should be comfortable, spacious, and practical. The traditional type of 'over-the-shoulder' camera bag is not very suitable for travel photography, a day-pack is better. Remember that you will be carrying your gear for for the

entire journey, so it's worth buying something comfortable with good shoulder straps and a little extra room to fit both your camera gear and your daily necessities.

Flash equipment and tripods are not recommended. Our study themes will not address the use of advanced flash photography and the additional weight and bulk must be considered against the rare occasions of use – if used at all. Similarly for tripods, they are cumbersome and difficult to travel with. Practise and experience with using your digital equipment and fundamental skills will negate the need for tripod or monopod.

Finally, full travel insurance and coverage for your 'additional items' is absolutely necessary. Standard travel insurance is geneally inadequate to cover the value of your equipment unless you stipulate your equipment when buying insurance. It costs very little, so don't be caught short. Please check very carefully that you are fully covered and have completed all necessary details to qualify for suitable coverage.

We look forward to seeing you in Tasmania!



PHOTOGRAPHY
by Ewen Bell